

IPSCO STS (Short Throw Shifter) Installation Instructions 2003-2010 Dodge Viper



WARNING

Modification of your vehicle with the parts identified above may alter its stock performance; the buyer hereby expressly assumes all risks associated with any such modification.

DISCLAIMER OF WARRANTY

Seller disclaims any warranty express or implied with respect to the parts sold hereby whether as to merchantability, fitness for particular purpose, or any other matter. IPSCO assumes no liability expressed or implied for the improper installation or use of this product or its components. IPSCO is NOT responsible for any damage, consequential or otherwise for equipment failure after installation.

IPSCO STS (Short Throw Shifter) Installation Instructions

2003-2010 Dodge Viper

Parts:

- IPSCO STS (Short Throw Shifter)
- shifter cover mounting bolts (4)
- push-in nylon rivets (8)
- 3/4" plastic plugs (2)
- Loctite RTV Silicone

Tools:

- Phillips head screw driver (medium)
- plastic pry tool
- 3/4" open end wrench or crescent wrench
- 17mm open end wrench or crescent wrench
- socket ratchet
- 6" or 8" socket extension
- universal joint
- 13mm socket
- 3/16" Allen wrench
- drill
- 1/4" drill bit
- 3/4" drill bit or step drill bit
- vise grips
- hammer
- punch
- small pry bar

Supplies:

- razor blade
- grease
- Red or Blue Loctite

IPSCO STS (Short Throw Shifter) Installation Instructions

2003-2010 Dodge Viper

Installation Instructions:

- 1 Remove console shifter bezel
Raise the parking brake handle to its most upright position



Remove the 6 socket head cap screws from the bezel ring using a 3/16" Allen wrench

IPSCO STS (Short Throw Shifter) Installation Instructions 2003-2010 Dodge Viper



Invert the upper shift boot towards the shift knob to gain access to the retaining nut



Place the 3/4" wrench on the retaining nut and the 17mm" (for OE shift knob) on the bottom of the shift knob

Turn the upper wrench counter-clockwise to loosen the bond
Unscrew the shift knob with the upper shift boot attached

IPSCO STS (Short Throw Shifter) Installation Instructions 2003-2010 Dodge Viper



Cut the tie wrap holding the lower shift boot to the isolator



Use the pry tool to remove the console shifter bezel

IPSCO STS (Short Throw Shifter) Installation Instructions 2003-2010 Dodge Viper



Once the bezel has been pulled away, disconnect the electrical connections
Mark the window switches L (left) and R (right)



Disconnect the window switches and the accessory power outlet
Lift the rear of the console shifter bezel; passing the parking brake handle through its boot

IPSCO STS (Short Throw Shifter) Installation Instructions 2003-2010 Dodge Viper

- 2 Remove the center console

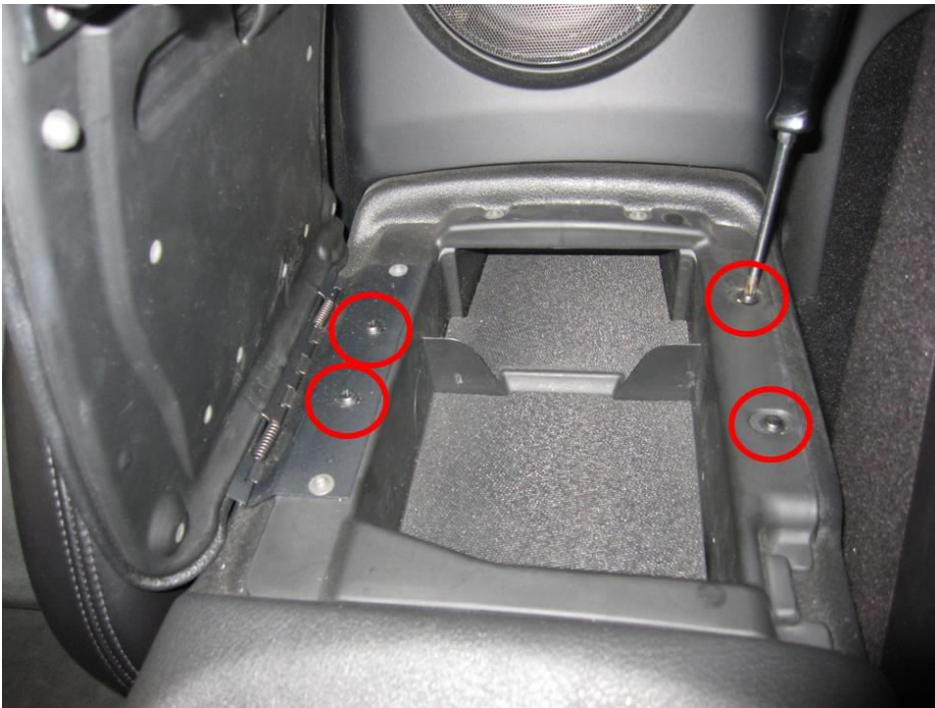


Remove the 2 forward screws
Move both seats to their most forward position
Position both seatbacks to their most forward position

IPSCO STS (Short Throw Shifter) Installation Instructions 2003-2010 Dodge Viper



Remove the 2 rear screws (have large flat washer and are slightly larger than the forward screws)



Remove the 4 screws inside the console box (do not remove the 4 torx screws)

IPSCO STS (Short Throw Shifter) Installation Instructions 2003-2010 Dodge Viper



Pull the bottom of the rear bulkhead forward to release the rear of the center console



Carefully pull out the front ears of the center console around the center instrument panel bezel

IPSCO STS (Short Throw Shifter) Installation Instructions 2003-2010 Dodge Viper



Lift the front of the center console over the parking brake and pull the rear away from the rear bulkhead



Disconnect the rear accessory power outlet at the connection point (12" down the wire)
Lift the front of the center console up over the dash
Remove the center console

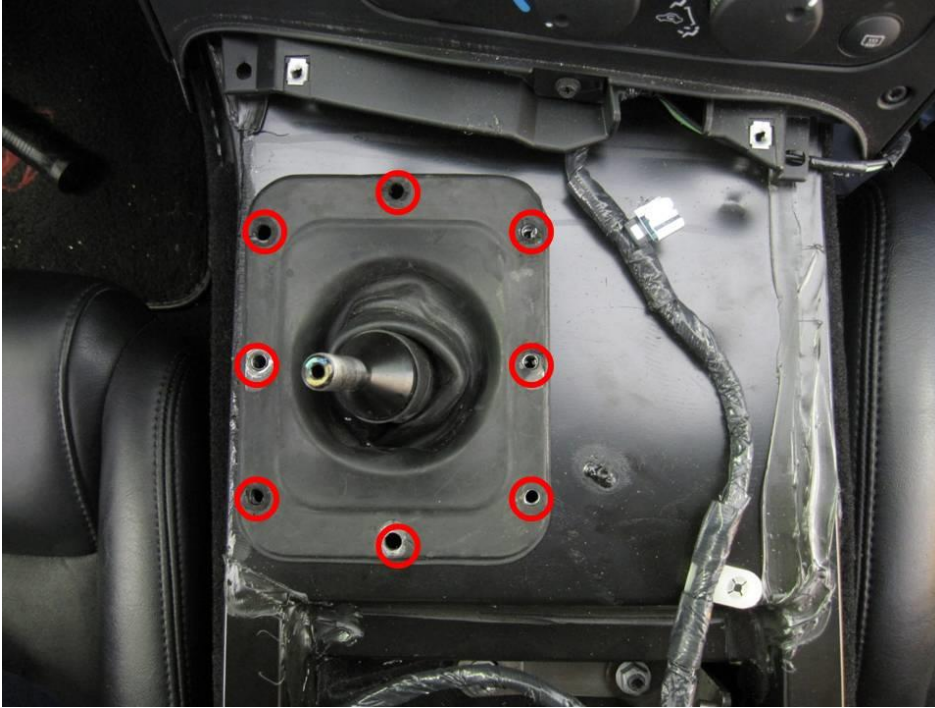
IPSCO STS (Short Throw Shifter) Installation Instructions 2003-2010 Dodge Viper

- 3 Remove the lower shift boot

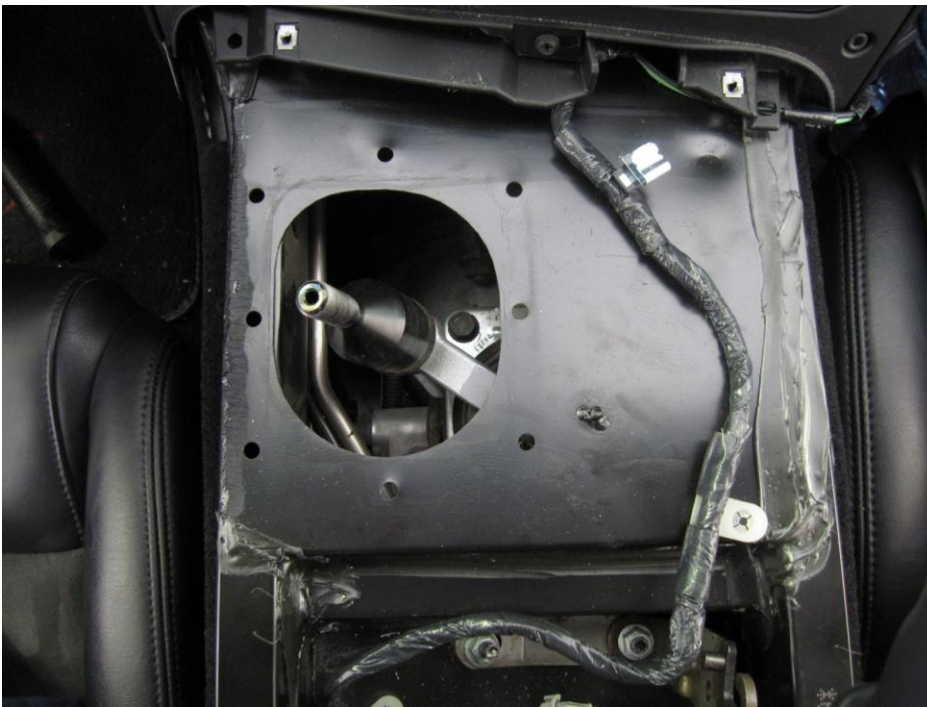


Disconnect the wiring bundle from its post and move it towards the passenger side
Disconnect the clip holding the accessory power outlet connector to the lower section of the center instrument panel bezel and move it towards the passenger side

IPSCO STS (Short Throw Shifter) Installation Instructions 2003-2010 Dodge Viper



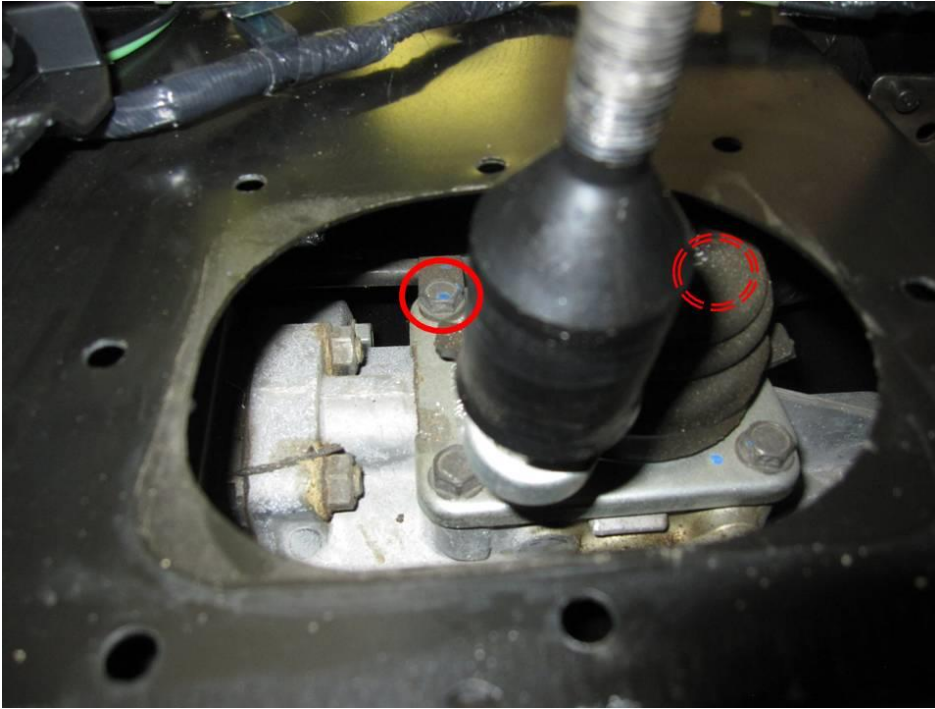
Drill out the rivets (8) using a 1/4" bit
The rivets will want to rotate while drilling them out, use vise grips to keep the rivets from turning to minimize the damage to the lower shift boot



Pull the boot away from the isolator

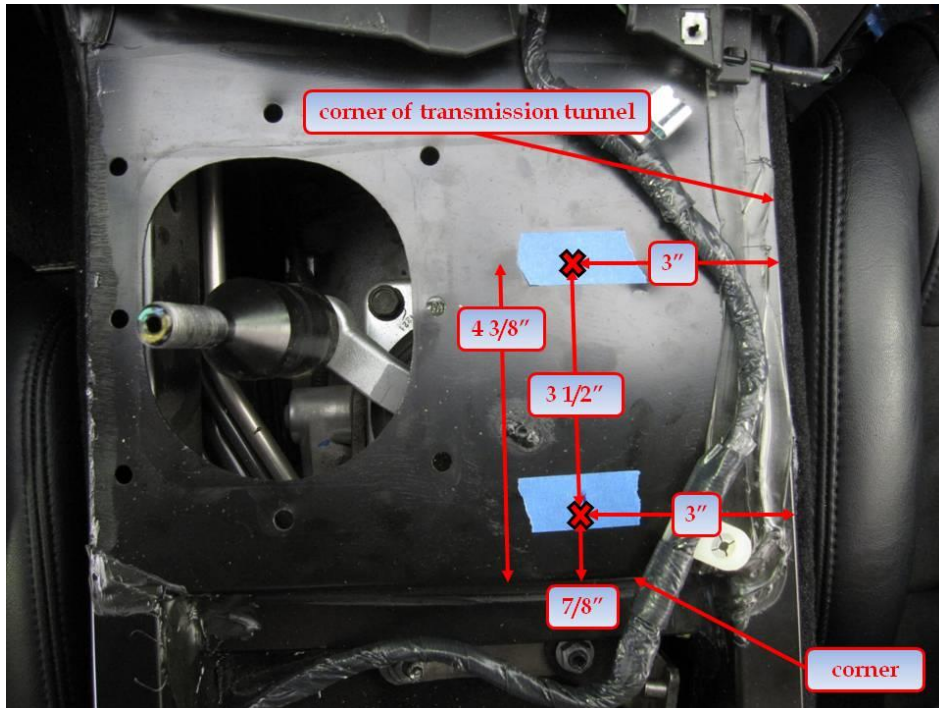
IPSCO STS (Short Throw Shifter) Installation Instructions 2003-2010 Dodge Viper

- 4 Remove the original shifter



2 of the shifter cover mounting bolts aren't easily accessible
They can be removed by drilling access holes just above them in the transmission tunnel

IPSCO STS (Short Throw Shifter) Installation Instructions 2003-2010 Dodge Viper



Mark the 2 spots on top of the transmission tunnel
Visually inspect where the marked spots are making sure they are above the 2 shifter cover mounting bolts
Use a hammer and punch in both marked spots to make an indentation so that the drill bit won't travel



Drill the pilot holes in the transmission tunnel using a 1/4" bit

IPSCO STS (Short Throw Shifter) Installation Instructions 2003-2010 Dodge Viper



Drill the final holes in the transmission tunnel using a 3/4" bit (or a step bit)

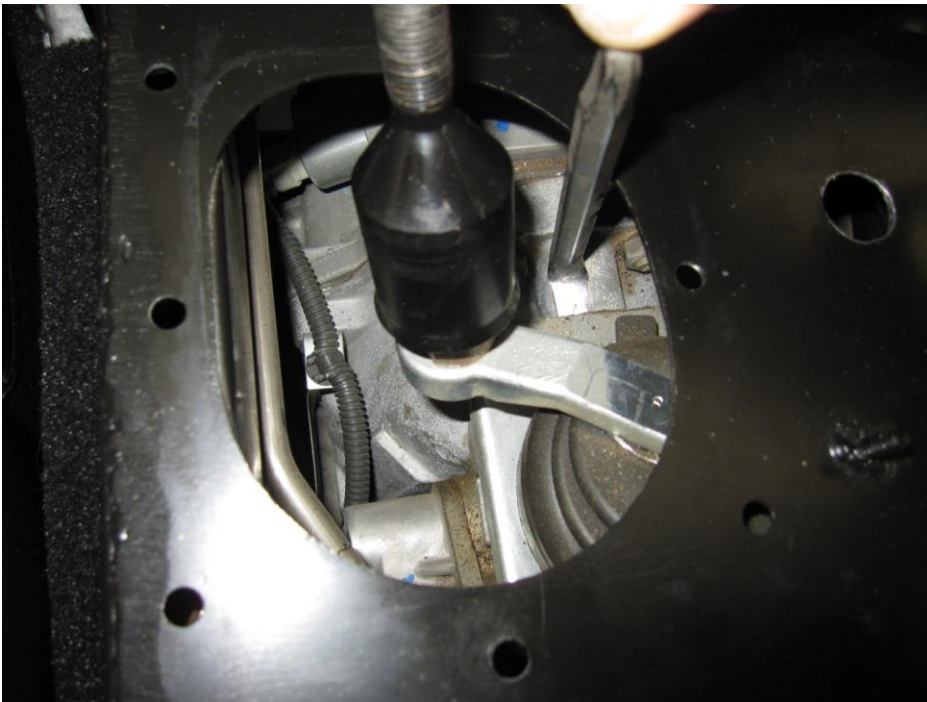


Remove the 4 shifter cover mounting bolts holding the shifter with a socket ratchet, 13mm socket, extension and universal joint

IPSCO STS (Short Throw Shifter) Installation Instructions 2003-2010 Dodge Viper

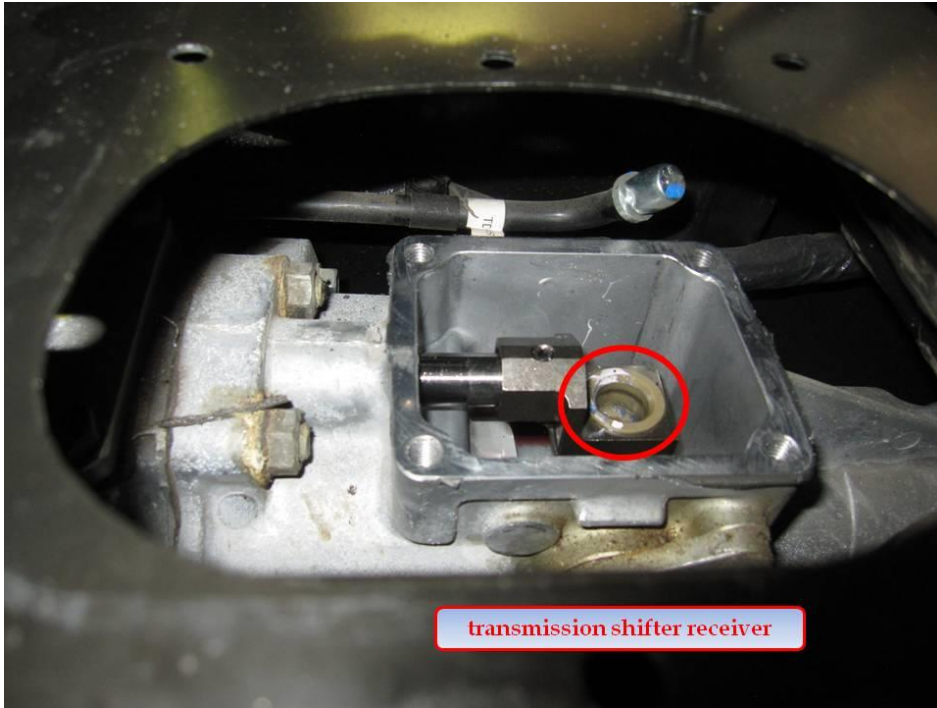


Push aside the connector that is kept down by the forward passenger side cover mounting bolt



Use the small pry bar to break the original shifter away from the transmission tail shifter housing
Lift the original shifter up and away from the transmission tail shifter housing and slip it through the opening

IPSCO STS (Short Throw Shifter) Installation Instructions 2003-2010 Dodge Viper



Remove the gasket material from the shifter mating surface on the transmission tail shifter housing with a razor blade
Clean all debris out of the transmission tail shifter housing

IPSCO STS (Short Throw Shifter) Installation Instructions 2003-2010 Dodge Viper

5 Install the IPSCO STS



Apply grease to the STS shifter stem ball
Apply Loctite RTV silicone (supplied) to the outer mating surface on the STS



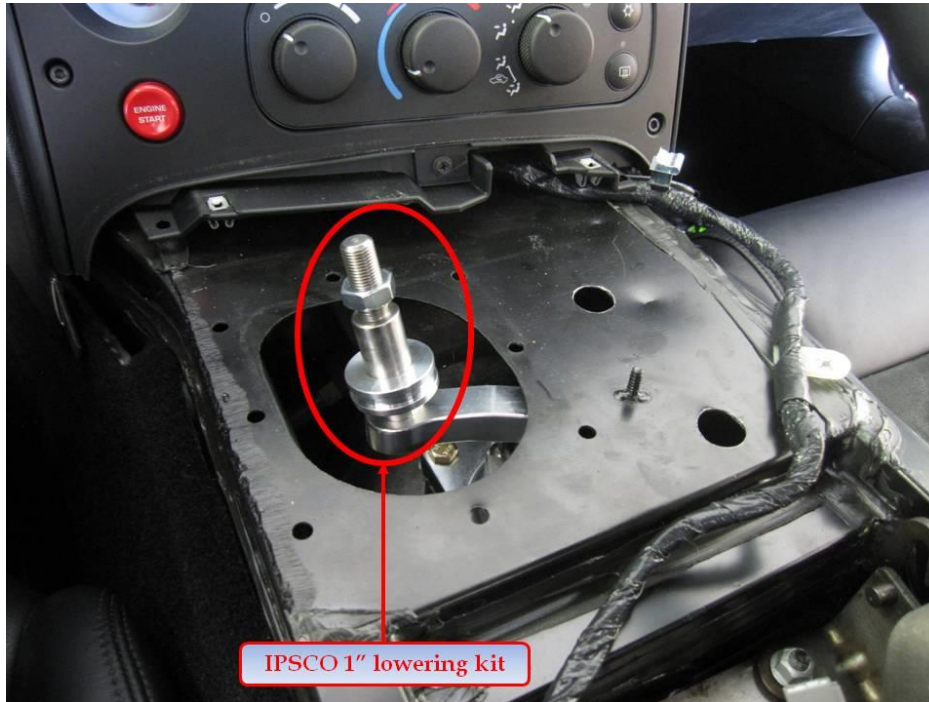
Place the STS into the transmission tunnel and position it over the transmission tail shifter housing

IPSCO STS (Short Throw Shifter) Installation Instructions 2003-2010 Dodge Viper



Insert the shifter stem ball of the STS into the transmission shifter receiver

IPSCO STS (Short Throw Shifter) Installation Instructions 2003-2010 Dodge Viper



Align the 4 holes and apply a small drop of Red or Blue Loctite to the threads of the new shifter cover mounting bolts (supplied)

Insert the new shifter cover mounting bolts into each corner

Start with the 2 easily accessible corners (driver side)

Make sure to reattach the connector on the forward passenger side cover mounting bolt

The connector installs on top of the STS housing

Torque each shifter cover mounting bolt to 13 ft/lbs

Note: An IPSCO 1" lowering kit was also installed during this installation

IPSCO STS (Short Throw Shifter) Installation Instructions 2003-2010 Dodge Viper

- 6 Test the STS
 - Screw the shift knob onto the STS shifter handle
 - Work through the gears to ensure the STS is installed correctly
 - Remove the shift knob from the STS shifter handle
- 7 Install the lower shift boot



- Apply Loctite RTV Silicone (supplied) to the mating surface on the bottom of the lower shift boot
Place the lower shift boot over the STS shifter handle
Attach the lower shift boot using the supplied push-in nylon rivets (supplied)
Position the boot opening around the isolator of the OE shifter shaft (in this case, the lower shift boot 1" lowering kit collar; use the tie wrap (supplied with that kit) to tighten the boot to the lower shift boot collar)
Insert the plastic plugs (supplied) into the 2 drilled access holes
Connect the wiring bundle to its post
Connect the clip holding the accessory power outlet connector back to the lower section of the center instrument panel bezel
- 8 Install the center console
 - Insert the rear section of the center console under the rear bulkhead
 - Connect the rear accessory power outlet connector
 - Position the center console so that the parking brake handle will pass through its opening
 - Carefully pull out the front ears of the center console and position it back in place around the center instrument panel bezel

IPSCO STS (Short Throw Shifter) Installation Instructions 2003-2010 Dodge Viper



Attach the center console with the 2 forward screws, 2 rear screws and 4 console box screws

IPSCO STS (Short Throw Shifter) Installation Instructions 2003-2010 Dodge Viper

- 9 Install the console shifter bezel
 - Connect the window switches and the accessory power outlet
 - Raise the parking brake handle to its most upright position
 - Pass the parking brake through its boot
 - Position the console shifter bezel in place
 - Snap it down to the center console
 - Screw the retaining nut to the desired height



Screw down the shift knob with the upper shift boot attached

Note: An aftermarket shift knob was installed during this installation.

IPSCO STS (Short Throw Shifter) Installation Instructions 2003-2010 Dodge Viper

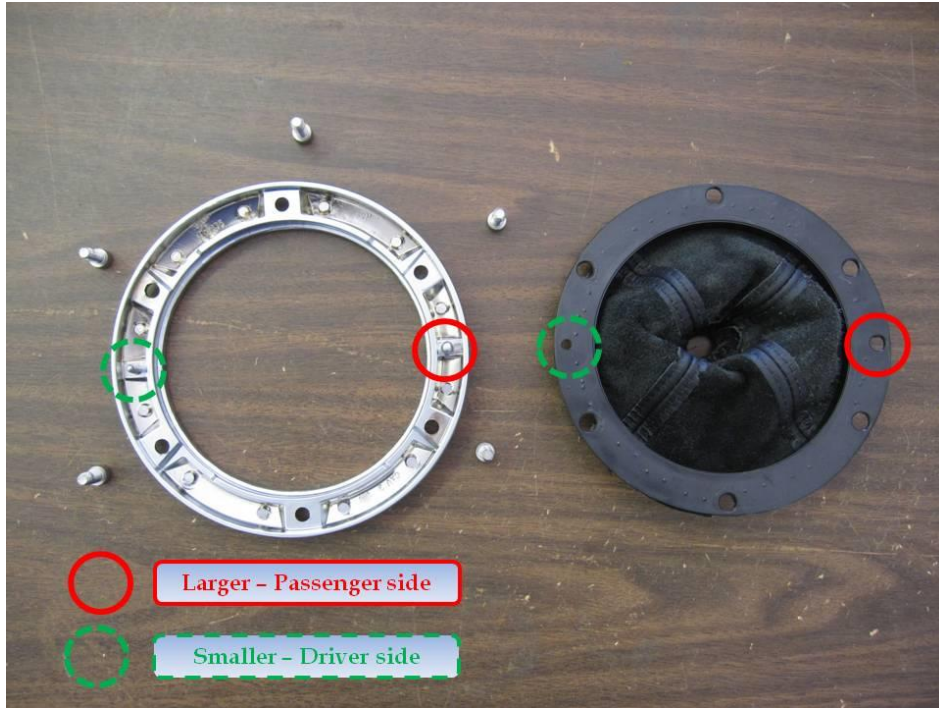


Place the 3/4" wrench on the retaining nut and the 17mm" (for OE shift knob) on the bottom of the shift knob

Turn the upper wrench clockwise to tighten

Revert the upper shift boot to its original position

IPSCO STS (Short Throw Shifter) Installation Instructions 2003-2010 Dodge Viper



Position the upper shift boot using its 2 alignment guide holes; the larger one on the right (passenger side) and the smaller one on the left (drivers side)

Position the bezel ring over the upper shift boot

Align the bezel ring alignment guide pins to the upper shift boot alignment guide holes; larger on the right, smaller on the left

Attach the 6 socket head cap screws for the bezel ring using a 3/16" Allen wrench

