

**IPSCO STS (Short Throw Shifter) Installation Instructions  
1996-2002 (GEN II) Dodge Viper**



**WARNING**

***Modification of your vehicle with the parts identified above may alter its stock performance; the buyer hereby expressly assumes all risks associated with any such modification.***

**DISCLAIMER OF WARRANTY**

***Seller disclaims any warranty express or implied with respect to the parts sold hereby whether as to merchantability, fitness for particular purpose, or any other matter. IPSCO assumes no liability expressed or implied for the improper installation or use of this product or its components. IPSCO is NOT responsible for any damage, consequential or otherwise for equipment failure after installation.***

# IPSCO STS (Short Throw Shifter) Installation Instructions

## 1996-2002 (GEN II) Dodge Viper

### Parts:

- IPSCO STS (Short Throw Shifter)
- shifter cover mounting bolts (4)
- push-in nylon rivets (8)
- 3/4" plastic plugs (2)
- Loctite RTV Silicone

### Tools:

- Phillips head screw driver (medium)
- plastic pry tool
- 3/4" open end wrench or crescent wrench
- 5/8" or 16mm open end wrench or crescent wrench
- socket ratchet
- 6" or 8" socket extension
- universal joint
- 13mm socket
- drill
- 1/4" drill bit
- 3/4" drill bit or step drill bit
- vise grips
- hammer
- punch
- small pry bar

### Supplies:

- razor blade
- grease
- Red or Blue Loctite

# IPSCO STS (Short Throw Shifter) Installation Instructions 1996-2002 (GEN II) Dodge Viper

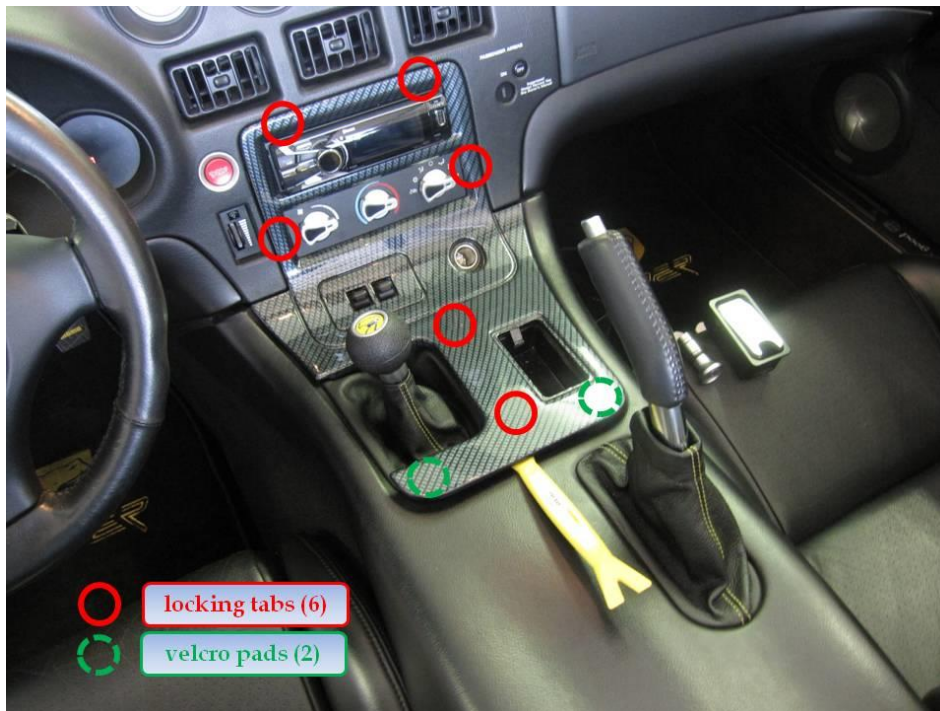
Installation Instructions:

- 1 Remove the radio bezel



Turn the A/C knobs to the horizontal position

## IPSCO STS (Short Throw Shifter) Installation Instructions 1996-2002 (GEN II) Dodge Viper

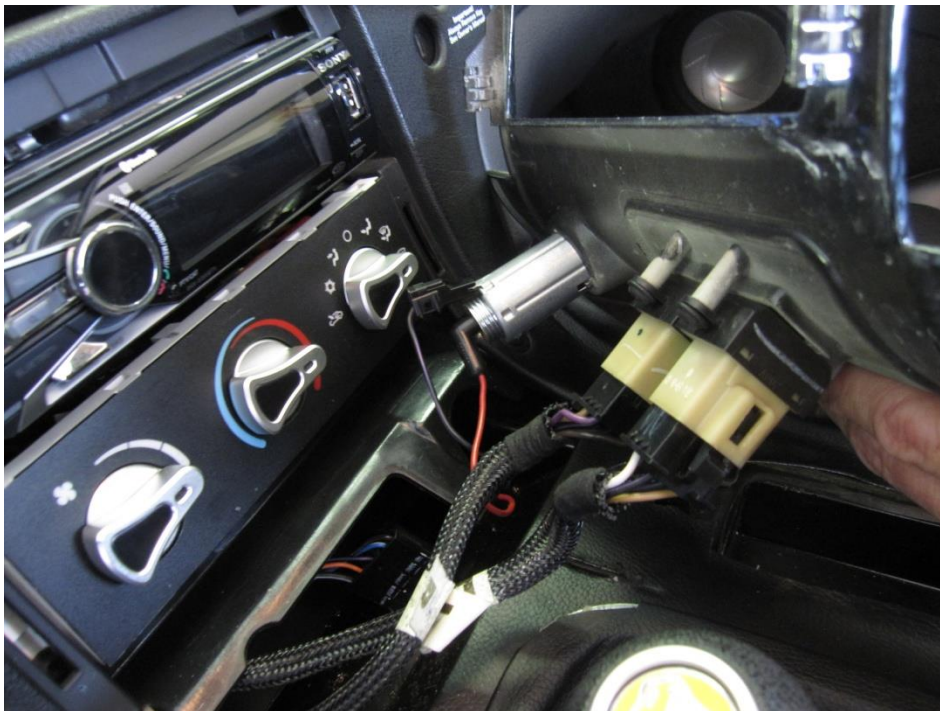


Remove the cigar lighter

Remove the ash tray

Raise the parking brake handle to its most upright position

Use the pry tool to break loose the 2 velcro pads and 6 locking tabs



Once the bezel has been pulled away, disconnect the electrical connections:  
window switches, cigar lighter and rear defrost switch (GTS only)

## IPSCO STS (Short Throw Shifter) Installation Instructions 1996-2002 (GEN II) Dodge Viper

- 2 Remove the center console  
Place the original shifter in 3rd gear



### Remove the shift knob

Push the upper shift boot down until the retaining nut is accessible

Place the 3/4" wrench on the retaining nut and the 5/8" (for OE shift knob) on the bottom of the shift knob

Turn the upper wrench counter-clockwise to loosen the bond

Unscrew the shift knob

\*Note: An aftermarket shift knob had been previously installed by this owner\*

## IPSCO STS (Short Throw Shifter) Installation Instructions 1996-2002 (GEN II) Dodge Viper



Move both seatbacks against the rear bulkhead  
Remove the 2 forward screws (shorter) and 2 rear screws (longer) with a phillips head screwdriver



Lift the rear of the center console up; passing the parking brake handle through the its boot and the upper shift boot  
Once the parking brake handle is clear, remove the center console

## IPSCO STS (Short Throw Shifter) Installation Instructions 1996-2002 (GEN II) Dodge Viper

- 3 Remove the lower shift boot



Drill out the rivets (8) using a 1/4" bit  
The rivets will want to rotate while drilling them out, use vise grips to keep the rivets from turning to minimize the damage to the lower shift boot

## IPSCO STS (Short Throw Shifter) Installation Instructions 1996-2002 (GEN II) Dodge Viper



Pull the boot away from the isolator

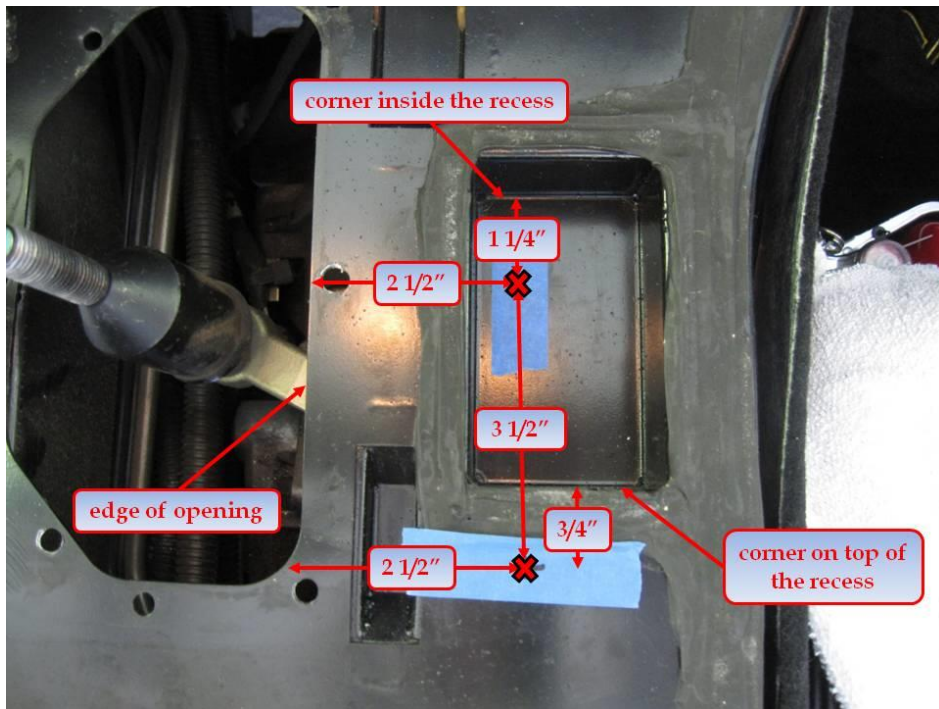
- 4 Remove the original shifter



2 of the shifter cover mounting bolts aren't easily accessible  
They can be removed by drilling access holes just above them in the transmission tunnel

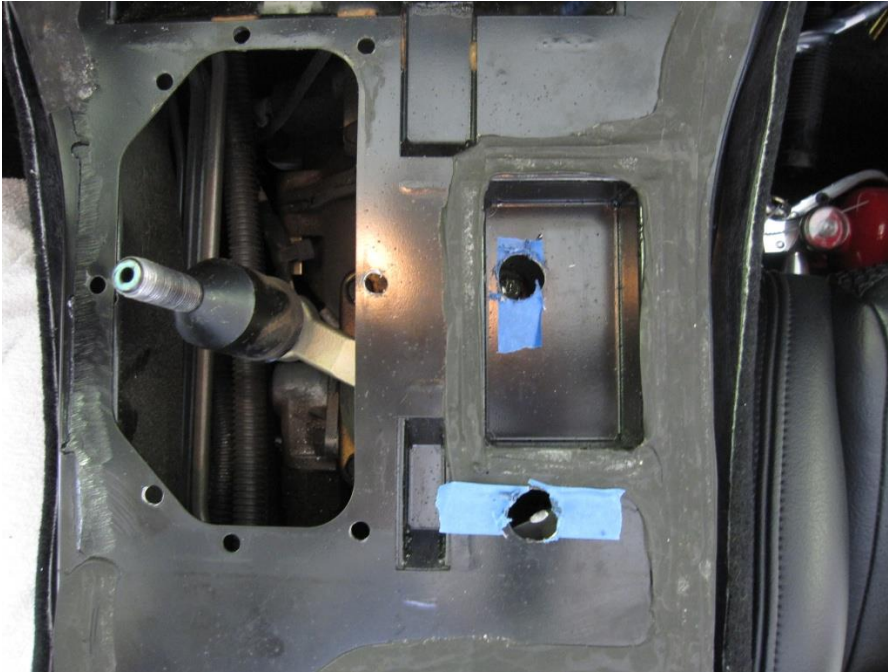


## IPSCO STS (Short Throw Shifter) Installation Instructions 1996-2002 (GEN II) Dodge Viper



Mark the 2 spots, one inside the ash tray recess and one on top of the transmission tunnel  
Visually inspect where the marked spots are making sure they are above the 2 shifter cover mounting bolts

## IPSCO STS (Short Throw Shifter) Installation Instructions 1996-2002 (GEN II) Dodge Viper



Use a hammer and punch in both marked spots to make an indentation so that the drill bit won't travel

Drill a pilot hole in the ash tray recess using a 1/4" bit

Drill the hole in the ash tray recess using a 3/4" bit (or a step bit)

There is a square cross brace just to the side of the rear hole

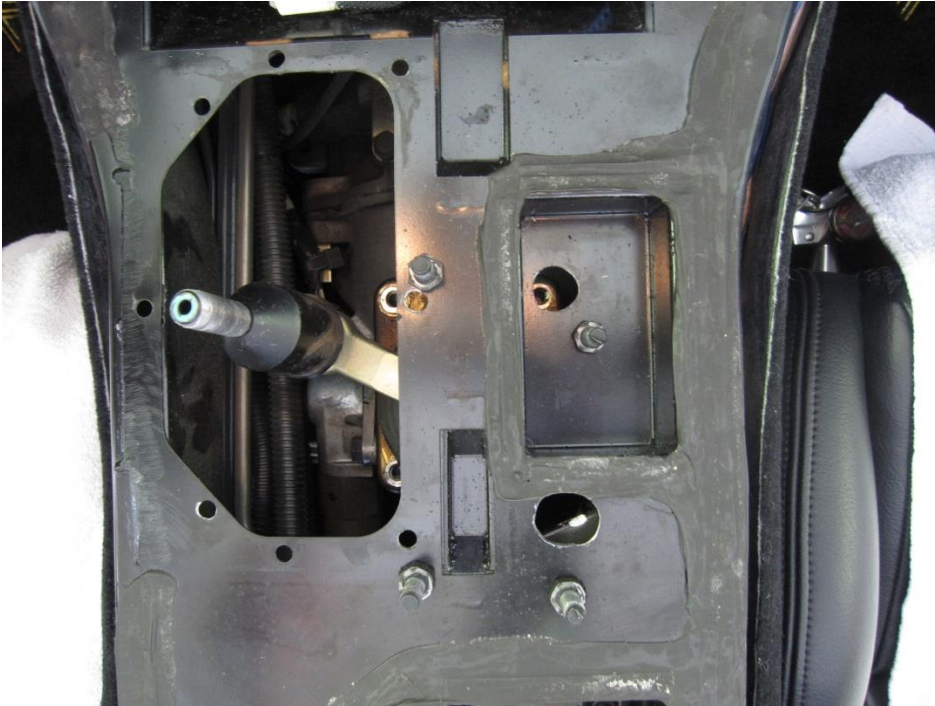
Drill a pilot hole in the transmission tunnel using a 1/4" bit

Feel the underside of the hole to make sure you are going to miss the cross brace with the 3/4" bit (or step bit)

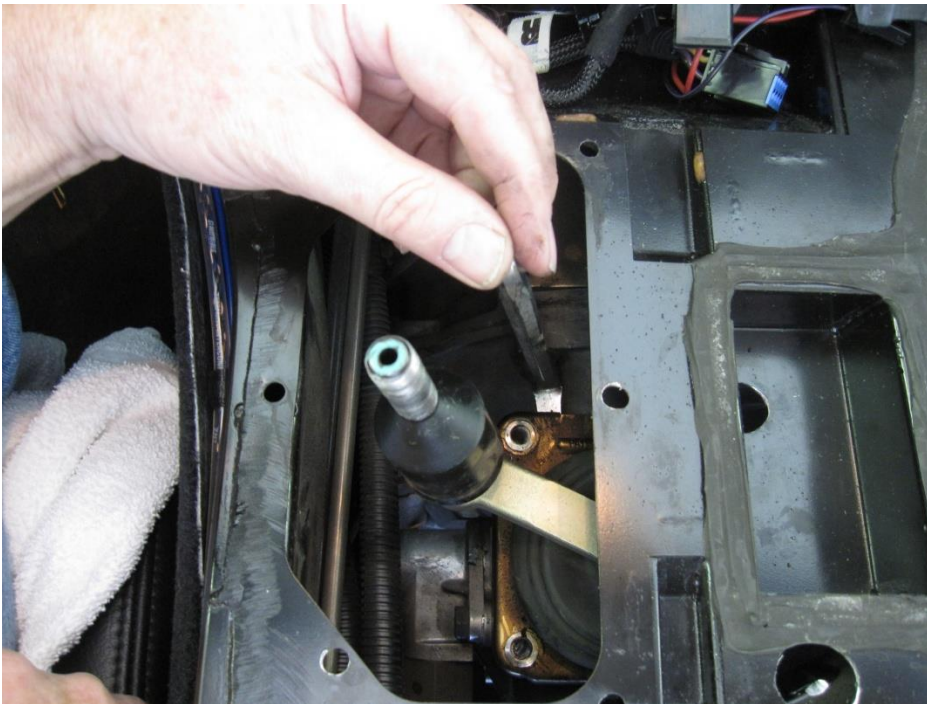
Be careful not to drill into the square cross brace

Drill the upper hole in the transmission tunnel using a 3/4" bit (or a step bit)

## IPSCO STS (Short Throw Shifter) Installation Instructions 1996-2002 (GEN II) Dodge Viper

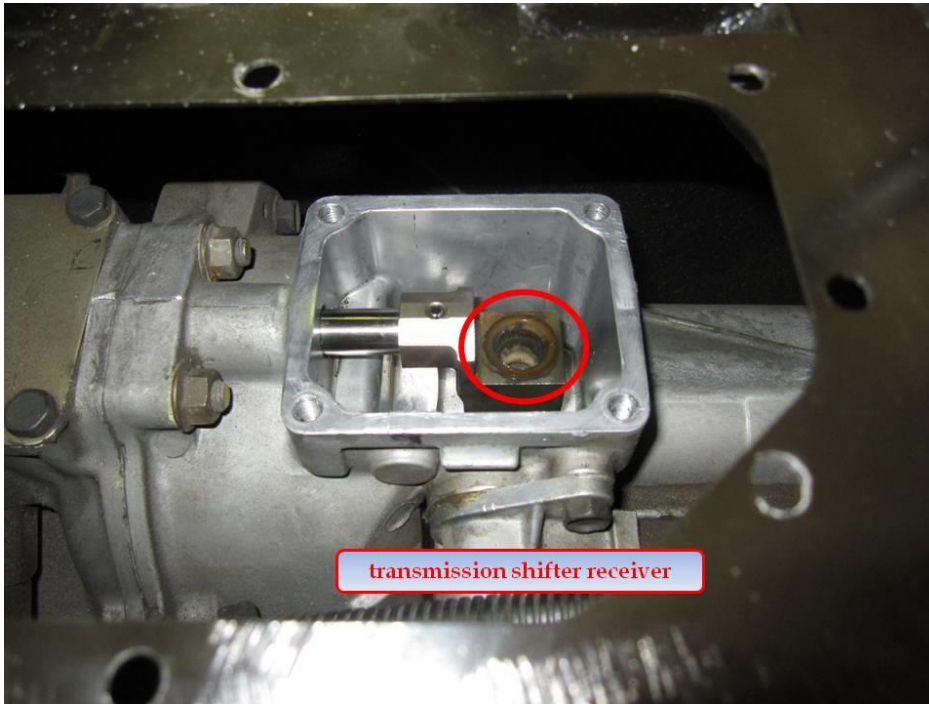


Remove the 4 shifter cover mounting bolts holding the shifter with a socket ratchet, 13mm socket, extension and universal joint (if needed)



Use the small pry bar to break the original shifter away from the transmission tail shifter housing  
Lift the original shifter up and away from the transmission tail shifter housing and slip it through the opening

## IPSCO STS (Short Throw Shifter) Installation Instructions 1996-2002 (GEN II) Dodge Viper



Remove gasket material from the shifter mating surface on the transmission tail shifter housing with a razor blade  
Clean all debris out of the transmission tail shifter housing

## IPSCO STS (Short Throw Shifter) Installation Instructions 1996-2002 (GEN II) Dodge Viper

### 5 Install the IPSCO STS



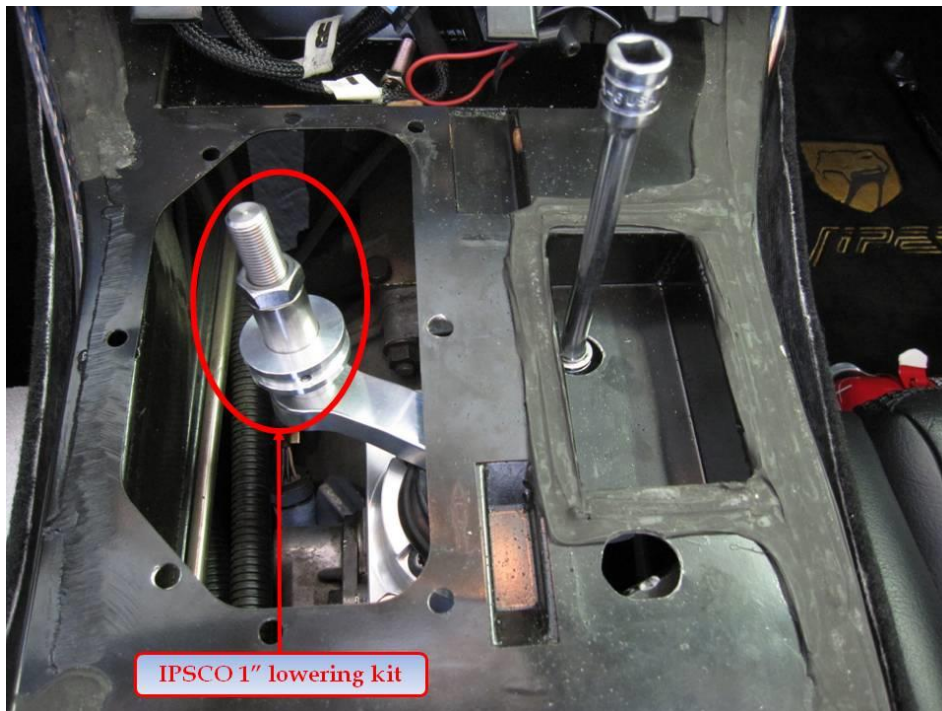
Apply grease to the STS shifter stem ball

Apply Loctite RTV silicone (supplied) to the outer mating surface on the STS

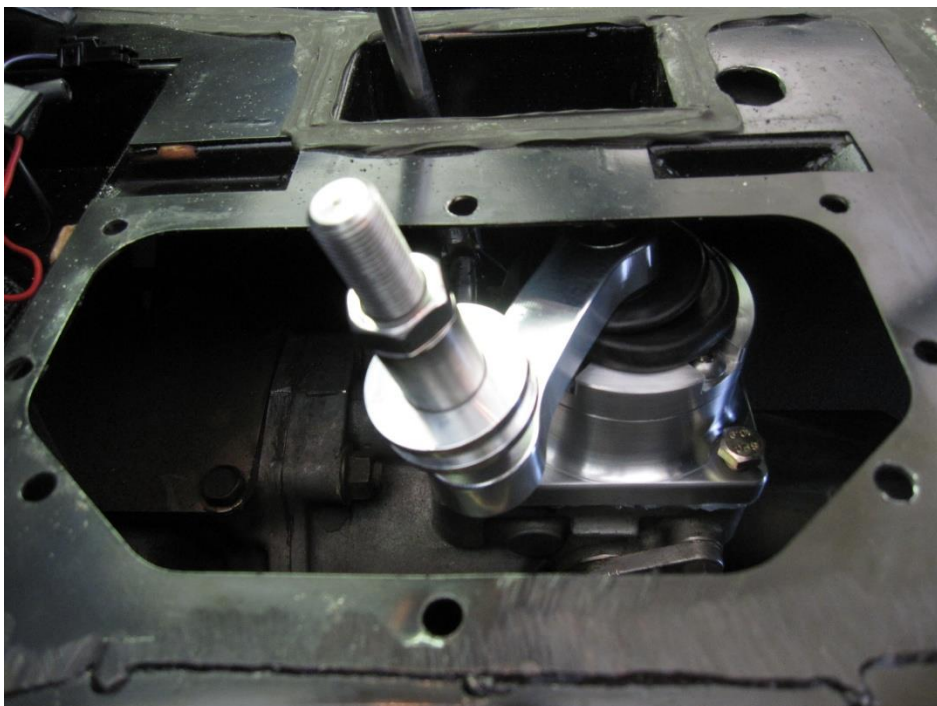
Place the STS into the transmission tunnel and position it over the transmission tail shifter housing

Insert the shifter stem ball of the STS into the transmission shifter receiver

## IPSCO STS (Short Throw Shifter) Installation Instructions 1996-2002 (GEN II) Dodge Viper



Align the 4 holes and apply a small drop of Red or Blue Loctite to the threads of the new longer shifter cover mounting bolts (supplied)  
Insert the new shifter cover mounting bolts into each corner  
Start with the 2 easily accessible corners (driver side)  
\*Note: An IPSCO 1" lowering kit was also installed during this installation\*



Torque each shifter cover mounting bolt to 13 ft/lbs

## IPSCO STS (Short Throw Shifter) Installation Instructions 1996-2002 (GEN II) Dodge Viper

### 6 Test the STS

Screw the shift knob onto the STS shifter handle

Work through the gears to ensure the STS is installed correctly, you may need to start the motor to allow the transmission gears to align while shifting.

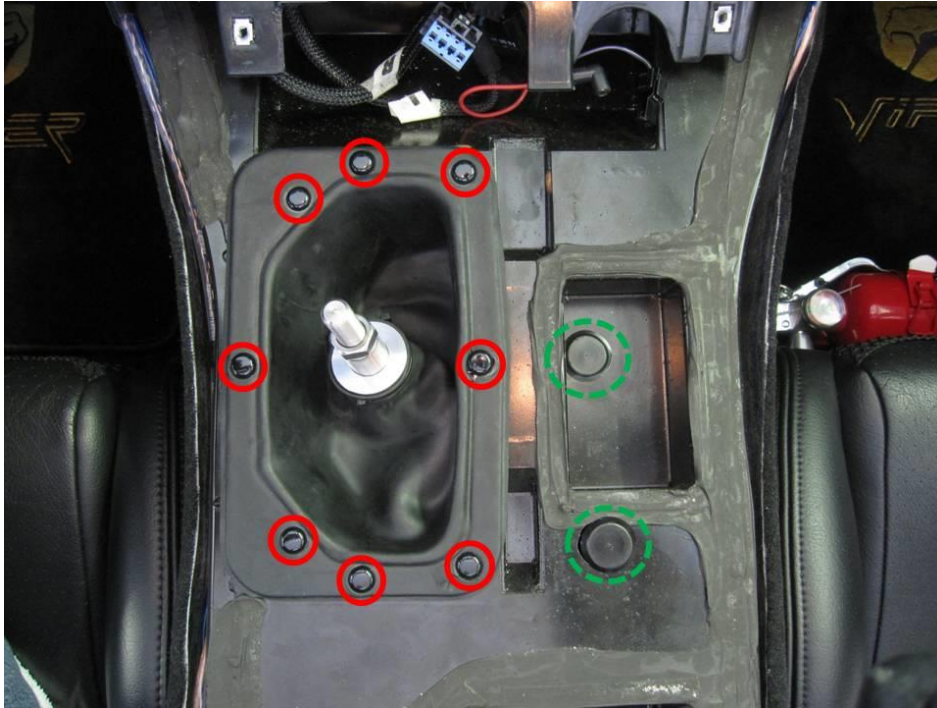
Remove the shift knob from the STS shifter handle

### 7 Install the lower shift boot



Apply Loctite RTV Silicone (supplied) to the mating surface on the bottom of the lower shift boot  
Place the lower shift boot over the shift handle and match up the 8 holes

## IPSCO STS (Short Throw Shifter) Installation Instructions 1996-2002 (GEN II) Dodge Viper



Attach the lower shift boot using the supplied push-in nylon rivets (supplied)  
Position the boot opening around the isolator of the OE shift shaft (in this case, the lower shift boot 1" lowering kit collar; use the tie wrap (supplied with that kit) to tighten the boot to the lower shift boot collar)  
Insert the plastic plugs (supplied) into the 2 drilled access holes (ash tray and upper transmission tunnel)



## IPSCO STS (Short Throw Shifter) Installation Instructions 1996-2002 (GEN II) Dodge Viper

- 8 Install the center console



Position the center console so that the parking brake handle will pass through its boot in the console

Pass the handle of the STS through the upper shift boot

Attach the center console with the 2 short screws in the front and the 2 longer screws in the rear

## IPSCO STS (Short Throw Shifter) Installation Instructions 1996-2002 (GEN II) Dodge Viper

### 9 Attach the shift knob



Push the upper shift boot down past the retaining nut  
Screw the shift knob onto the STS shifter handle  
Screw the retaining nut to the desired height  
Use the 3/4" and 5/8" wrenches to tighten the shift knob to the retaining nut  
Pull the upper shift boot up over the retaining nut to the desired height

## IPSCO STS (Short Throw Shifter) Installation Instructions 1996-2002 (GEN II) Dodge Viper

### 10 Install the radio bezel

Turn the A/C knobs to the horizontal position

Raise the parking brake handle to its most upright position



Connect the electrical connections: window switches, cigar lighter and rear defrost switch (GTS only)

Position the bezel into place and apply pressure to each of the 6 locking tabs

Push down on the 2 velcro pads to mate them

Install the cigar lighter

Install the ash tray

## IPSCO STS (Short Throw Shifter) Installation Instructions 1996-2002 (GEN II) Dodge Viper

