

## *Installation instructions for IPSCO GEN 5 Rear Tow Hook*



### **WARNING**

*Modification of your vehicle with the parts identified above may alter its stock performance; the buyer hereby expressly assumes all risks associated with any such modification.*

### **DISCLAIMER OF WARRANTY**

*Seller disclaims any warranty express or implied with respect to the parts sold hereby whether as to merchantability, fitness for particular purpose, or any other matter. IPSCO assumes no liability expressed or implied for the improper installation or use of this product or its components. IPSCO is NOT responsible for any damage, consequential or otherwise for equipment failure after installation*

## ***Installation instructions for IPSCO GEN 5 Rear Tow Hook***

1. Jack up the rear of the car using factory jack points and place jack stands under the frame.
2. Remove both rear tires.
3. Now remove the two plastic panels that are used for the sway bar access by carefully removing the (4) small and (1) large plastic plugs shown below.



**Inner Plastic Sway Bar Access Panel**

Using a plastic pry bar like the one shown below will make this task a little easier.



4. After removing the two access panels you should have total access from one side of the car to the other, and see the frame slots shown below on both sides.



## ***Installation instructions for IPSCO GEN 5 Rear Tow Hook***

5. Using a 1/2" wrench take the rear tow bar assembly apart by removing the (4) nuts that attach the rear section to the main frame bar. Note these are nylon-insert locknuts to be reused later on; the bolts are welded to the main frame bar so they will not rotate. Also remove the two large 5/8 bolts with washers and nuts located in the ends of the main bar. **Note: Do Not remove adjuster brace from rear section.**



6. Now insert the main frame bar into the sway bar opening so that the ears on the main frame bar are pointing to the front of the car. This is much easier if there are two people to help guide the bar around some of the nut inserts sticking up from the lower panel. The main frame bar will fit between the two frame rails with the slot in them as pictured below with the anti-rotation bars next to the car frame rails.



7. Now install the two large 5/8 bolts with washer and nuts that were attached to the Main Frame bar when shipped and removed above in step 5. Do not tighten these bolts at this point, just lightly tighten so the bar can be adjusted later to center the rear section in the rear bumper slot.

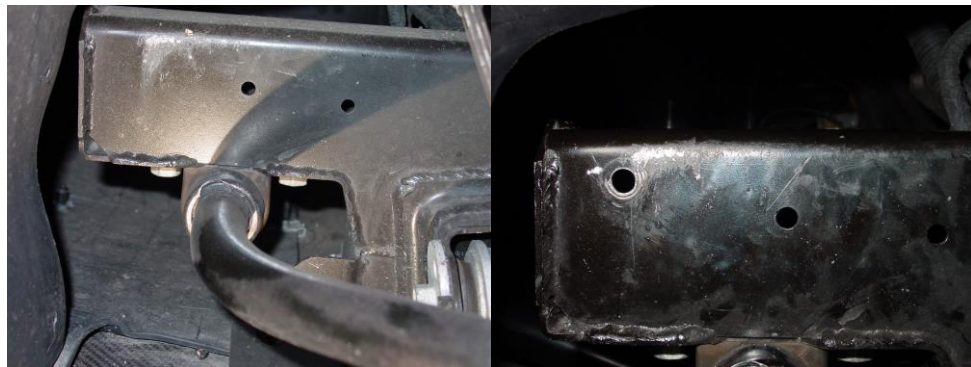
## ***Installation instructions for IPSCO GEN 5 Rear Tow Hook***

8. Now install the rear section from the rear of the car through the bumper opening being careful not to scratch the car and guide the rear section onto the four studs sticking out of the main frame bar. After the rear section is pushed onto the studs install the 4 Nylon-insert locknuts removed in step 5. You can use a long extension on your ratchet from the rear of the car or use the side sway bar accesses to install the nuts and tighten.

9. Using the drill template on the passenger side frame, place the two pins of the template into the two holes in the cars frame. Center punch the frame to mark where to drill a 5/16 hole through both frame walls. You will need to use a Jobber or long drill bit to get through both sides of the frame.



Drill Template



10. Install the 5/16 X 3 1/4 bolt through the hole just drilled in the frame. Cut the strap holding the adjuster brace and remove protective cover over the rod end. Install (3) 5/16 flat washer on the bolt and place the rod end of the adjuster brace over the bolt and install nut and tighten. If the rod end does not line up with the bolt hold onto the rod end and turn the nut on the adjuster brace in or out to get the correct length for the brace.



## *Installation instructions for IPSCO GEN 5 Rear Tow Hook*



11. Now using the adjuster brace nut, adjust the rear section so that it is centered up and down in the rear bumper slot. Once you have it centered tighten the rod end jam nuts at both ends of the adjuster brace to lock the adjuster brace in place.

12. Tighten the two 5/8 bolts using a wrench on the inside nut to keep it from turning to 100ft/lbs. (Use of an impact gun helps here).

13. Put a couple of drops of red or blue Loctite onto the threads of tow ring shaft and install the shaft into the receiver of the rear section. Tighten to 60 ft. /Lbs. After the shaft is torqued, screw the tow ring into the shaft all the way in so that the jam nut can be locked into place with the ring flat parallel to the ground with minimal threads showing.

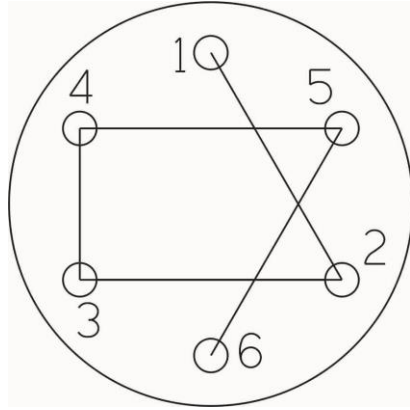


The ring plate maybe pushed up or down for storage when not being used.

14. Reinstall the two plastic access panels using the push pins removed in step 3 being careful not to break the pins.

15. Install rear tires and wheels and torque the lug nuts to 90 ft. /Lbs in three steps 30/60/90 using the pattern below.

## ***Installation instructions for IPSCO GEN 5 Rear Tow Hook***



STEP 1 - 30 LBS

STEP 2 - 60 LBS

STEP 3 - 90 LBS

16. Jack car up and remove jack stands, and lower car to ground and enjoy your new rear tow hook. When using the front or rear tow hook use a short sling strap so as not to damage your tow hooks or car.

Thanks for purchasing our products. [www.ipsco.org](http://www.ipsco.org)